

MARK V LAB

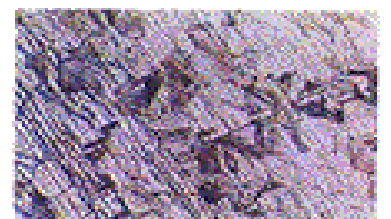
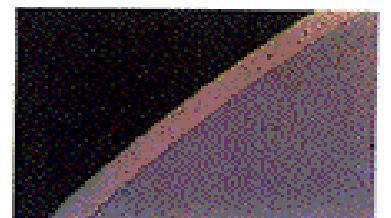
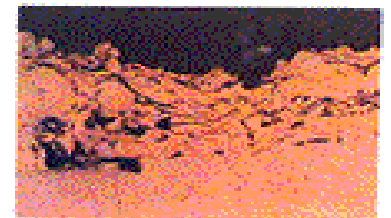
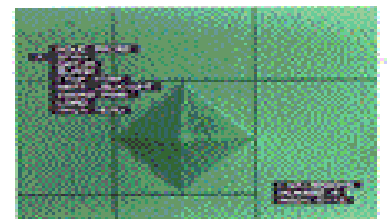
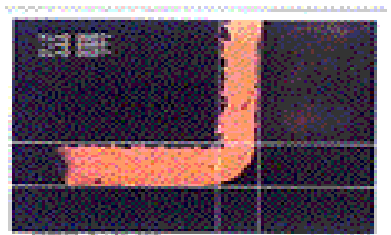
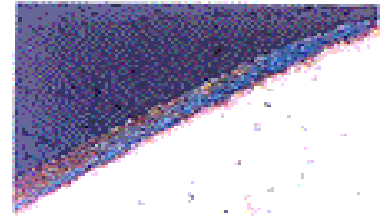
METALLURGICAL EQUIPMENT & SUPPLIES

FOR QUALITY, PRICE & CUSTOMER SERVICE

800-243-9776 markvmet@markvlab.com

PAGES

CUT-OFF & SECTIONING	Cut-off Machines	2-6
	Cut-off Wheels	3&4
	Diamond Blades	4
	PCB Saws	2&3
MOUNTING SYSTEMS & SUPPLIES	Acrylic & Epoxy Mounting Systems	6-9
	1 Minute Mounting System	8
	Mounting Powders & Supplies	9&10
	Automatic Mounting Press	10
GRINDING MACHINES & SUPPLIES	Grinder/Polisher Machines	11&12
	Silicon Carbide Discs	13-15
	S/C Rolls, Sheets, Strips & Belts	15&16
POLISHING MACHINES & SUPPLIES	Diamond Paste	20&21
	Diamond Polishing Suspensions & Sprays	20-22
	Alumina Suspensions & Powders	18&19
	Polishing Cloths	23&24
	Lapping Films	17&18
	Magna Disc Quick-Change Polishing System	24
LABORATORY EQUIPMENT & SUPPLIES	Metallurgical Microscopes	25
	Digital Camera Inspection & Measuring	26
	PC Capture Microscope Systems	26
	Microscope Accessories	26
	Microscope & Illuminators Bulbs	27
	Micro Hardness Tester & Micro Test Blocks	28
	Etchers & Vibrograver	28
	Hot Plates & Ovens	29
	Ultrasonic Cleaners & Solutions	30
	BULLETIN BOARD 2018	
	See our current Reconditioned Equipment Section	
	Check for deals on Surplus Supplies	



MARK V LAB

METALLURGICAL LOW DEFORMATION CUT-OFF & SECTIONING MACHINES

SELF CONTAINED COOLING, AUTO OR MANUAL FEEDS & FULL SAFETY SYSTEMS

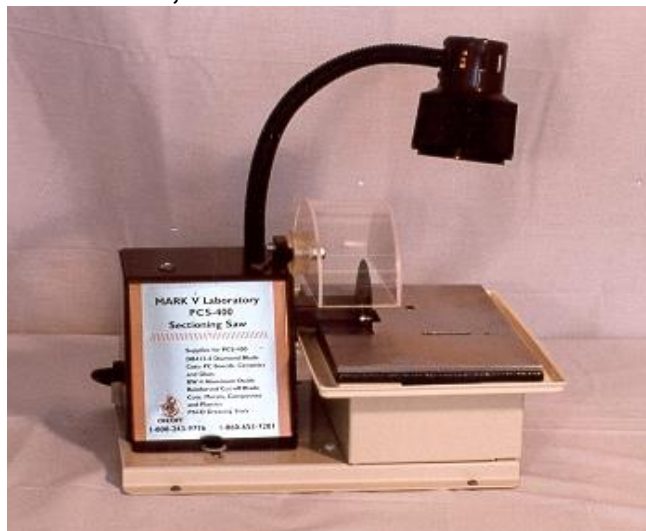


Manufactured by Mark V Lab, the 600 Series Line of machines offers automatic high-low speed sectioning without deformation to the sample. A Gravity Feed Systems allows for a wide range of Feed Rates, Automatic Operation and Shut-off. Internal Coolant Tank cools the blade and sprays the sample for a Cold Cut. Safety Features include Low Voltage Controls & Safety Cover Auto-Shut-Off Systems. Single, Dual & Variable Speed Motors offer Blade Speeds from 0-3500 r.p.m. with a cutting capacity of 1 1/2". A variety of Cut-Off Blades & Diamond Blades are available for cutting anything from very hard to soft materials such as alloyed steels, powdered metals, titanium, etc. to aluminum, brass, plastics and composite materials. 110/220V

Item	Description
CD660	DUAL SPEED, (2000 + 3450 RPM) 6" CUT-OFF MACHINE
CS660A	SINGLE SPEED (3450 RPM) 6" CUT-OFF MACHINE
CSQSV	STAINLESS QUICK ACTION VISE F/ SERIES 600
DW600A	DUAL WHEEL AUTOMATIC 6" CUT-OFF MACHINE
MC-660	VARIABLE SPEED (0-3000 RPM) 6" W/ MICRO CROSS- FEED
MV-660	VARIABLE SPEED (50-3500 RPM) 6" SECTIONING MACHINE

METALLURGICAL LOW DEFORMATION SECTIONING MACHINES WITH

SELF CONTAINED COOLING, MANUAL FEED GUIDES & FULL SAFETY COVERS



Manufactured by Mark V Lab. This Watercooled Diamond Sectioning Machine is ideal for cutting coupons from small PCB's, Thin Wall Metal Stampings, Eyelets, etc.. Small Desktop unit allows the operator to easily cut close to plated-through holes or other areas of interest. Thick multi-layer boards, even ceramic components are sectioned in minutes not hours. The machine comes with Enclosed Coolant Tank, **DB412-8** 4x .012 x 5/8" Diamond Blade, **RW-4** Reinforced Abrasive Blade, Heavy Duty Cutting Table, Work Lamp, GFI Circuit Protection and Safety Cover Spray Shield. 110V.

Item	Description
PCS-400	PRINTED CIRCUIT SAW W/4" DIAMOND BLADE & FEED TABLE
DB412-8	4"X.012"X5/8" DIAMOND BLADE, FINE CUTTING
DB420	4"X.014"X5/8" DIAMOND BLADE, AGGRESSIVE CUTTING
RW-4	4" X .040" X 5/8" REINFORCED ABRASIVE BLADE, EA.

MARK V LAB



Manufactured by Mark V LAB.

The **PCS-600** Watercooled Diamond Sectioning Machine is ideal for cutting coupons from small to large PCB's, even boards with mounted components. Table Top unit allows the user to easily cut close to plated-through holes or other areas of interest. Hard to cut Kevlar and thick multi-layer boards, even ceramic components are sectioned in minutes not hours. Unlike punches or even routers the PCS-600 gives a smooth deformation free cut that greatly reduces grinding time and eliminates stress induced failures.

The **MTS/600** Materials Sectioning Machine is ideal for cutting flat stock, thin wall stampings and tubes, can tops, circuit boards, etc. without deformation. Dual Range Motor gives blade speeds of 3450 & 2000 rpm. for cutting a wide variety of materials with Diamond 6 x .020 X 5/8" or Abrasive Blades. Both machines come with an Enclosed Coolant Tank, Large 18 x 11.5" Heavy Duty Cutting Table, Mitered Feed Guide Low Voltage Controls, Work Lamp & Safety Spray Shield. 110V.

Item	Description	Price
PCS-660	PRINTED CIRCUIT SAW W/6" DIAMOND BLADE & FEED GUIDE	
MTS/660	MATERIALS 6" TABLE SAW, W/ 2 SPEEDS	
DB626	6"X.020"X 22MM DIAMOND BLADE, EA.	
RW-6	6" X. 040" X 5/8" REINFORCED ABRASIVE BLADE, EA.	

LABORATORY RUBBER BONDED CUT-OFF & SECTIONING BLADES IN ALUMINUM OXIDE, SILICON CARBIDE & REINFORCED ABRASIVE

Item	Description
REPLACEMENT FOR	BUEHLER, LECO & STRUERS CUT-OFF MACHINES
1016-1	10"X1/16"X1-1/4" A/O CUT-OFF WHEEL, 10/PKG.
1016-4	10"X1/16"X1-1/4" A/O CUT-OFF WHEEL, 10/PKG.
1016-7	10"X1/16"X1-1/4" S/C CUT-OFF WHEEL, 10/PKG.
1040-1	10"X.040"X1-1/4" A/O CUT-OFF WHEEL, 10/PKG.
1216-1	12"X1/16"X1-1/4" A/O CUT-OFF WHEEL, 10/PKG.
1232-1	12"X3/32"X1-1/4" A/O CUT-OFF WHEEL, 10/PKG.
1232-4	12"X3/32"X1-1/4" A/O CUT-OFF WHEEL, 10/PKG.
1232-7	12"X3/32"X1-1/4" S/C CUT-OFF WHEEL, 10/PKG.
1245-1	12"X.045"X1-1/4" A/O CUT-OFF WHEEL, 10/PKG.
1432-1	14"X3/32"X1-1/4" A/O CUT-OFF WHEEL, 10/PKG.
1445-1	14"X.045"X1 1/4" A/O CUT-OFF WHEEL, 10/PKG.
916-1	9"X1/16"X1-1/4" A/O CUT-OFF WHEEL, 10/PKG.
916-4	9"X1/16"X1-1/4" A/O CUT-OFF WHEEL, 10/PKG.
916-7	9"X1/16"X1-1/4" S/C CUT-OFF WHEEL, 10/PKG.
932-1	9"X.032"X1-1/4" A/O CUT-OFF WHEEL, 10/PKG.
932-7	9"X.032"X1-1/4" S/C CUT-OFF WHEEL, 10/PKG.



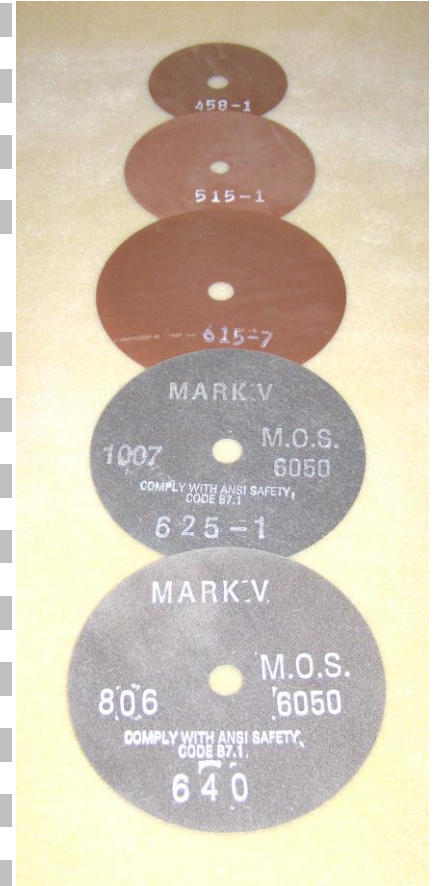
MARK V LAB

REPLACEMENT FOR BUEHLER, LECO & STRUERS SLOW SPEED SAWS

412-1	4"X.012"X1/2" A/O CUT-OFF WHEEL, EA.
412-1-10	4"X.012"X1/2" A/O CUT-OFF WHEEL, 10/PKG.
412-7	4"X.012"X1/2" S/C CUT-OFF WHEEL, EA.
412-7-10	4"X.012"X1/2" S/C CUT-OFF WHEEL, 10/PKG.
515-1	5"X.015"X1/2" A/O CUT-OFF WHEEL, EA.
515-1-10	5"X.015"X1/2" A/O CUT-OFF WHEEL, 10/ PKG.
515-7	5"X.015"X1/2" S/C CUT-OFF WHEEL, EA.
515-7-10	5"X.015"X1/2" S/C CUT-OFF WHEEL, 10/ PKG.

REPLACEMENT FOR MARK V LAB CUT-OFF & SECTIONING MACHINES

615-1	6"X.015"X5/8" A/O CUT-OFF WHEEL, EA.
615-10	6"X.015"X5/8" A/O CUT-OFF WHEEL, 10/PKG.
615-7	6"X.015"X5/8" S/C CUT-OFF WHEEL, EA.
615-7-10	6"X.015"X5/8" S/C CUT-OFF WHEEL, 10/PKG.
665-1	6"X.015"X 22MM A/O CUT-OFF WHEEL, EA.
665-10	6"X.015"X 22MM A/O CUT-OFF WHEEL, 10/PKG.
625-1	6"X.025"X5/8" A/O CUT-OFF WHEEL, EA.
626-1	6"X.025"X 22MM A/O CUT-OFF WHEEL, EA.
626-10	6"X.025"X 22MM A/O CUT-OFF WHEEL, EA.
625-10	6"X.025"X5/8" A/O CUT-OFF WHEEL, 10/PKG.
625-7	6"X.025"X5/8" S/C CUT-OFF WHEEL, EA.
625-7-10	6"X.025"X5/8" S/C CUT-OFF WHEEL, 10/PKG.
640	6"X.040"X5/8" A/O CUT-OFF WHEEL, EA.
640-10	6"X.040"X5/8" A/O CUT-OFF WHEEL, 10/PKG.
646	6"X.040"X 22MM A/O CUT-OFF WHEEL, EA.
646-10	6"X.040"X 22MM A/O CUT-OFF WHEEL, 10/PKG.
644	6"X.040"X5/8" A/O CUT-OFF WHEEL, EA.
644-10	6"X.040"X 5/8" A/O CUT-OFF WHEEL, 10/PKG.
647	6"X.040"X5/8" S/C CUT-OFF WHEEL, EA.
647-10	6"X.040"X5/8" S/C CUT-OFF WHEEL, 10/PKG.
667	6"X.040"X 22MM S/C CUT-OFF WHEEL, EA.
667-10	6"X.040"X 22MM S/C CUT-OFF WHEEL, 10/PKG.
RW-4	4" X .040" X 5/8" REINFORCED WHEEL, EA.
RW-4-10	4" X .040"X5/8" REINFORCED A/O WHEELS, 10/PKG.
RW-6	6" X. 040" X 5/8" REINFORCED WHEEL, EA.
RW-6-10	6" X .040"X5.8" REINFORCED A/O WHEELS, 10/PKG.



LABORATORY GRADE METAL BONDED DIAMOND & BORAZON BLADES

DIAMOND BLADES IN FINE SECTIONING & AGGRESSIVE GRITS

Item	Description
REPLACEMENT FOR	MARK V LAB SECTIONING MACHINES
DB412-8	4"X.012"X5/8" DIAMOND BLADE FOR PCS-400 FINE
DB420	4"X.014"X5/8" DIAMOND BLADE FOR PCS-400 COARSE
DB619	6"X.019"X5/8" DIAMOND BLADE FOR SERIES 600 FINE
DB669	6"X.019"X 22MM DIAMOND BLADE FOR SERIES 600 FINE
DB620	6"X.020"X5/8" DIAMOND BLADE FOR SERIES 600 COARSE
DB626	6"X.020"X 22MM DIAMOND BLADE FOR SERIES 600 COARSE
DB720	7"X.020"X1.25" DIAMOND BLADE FOR 700 SERIES



REPLACEMENT FOR BUEHLER, LECO & STRUERS DIAMOND SAWS

DB3006	3"X.006" X1/2" DIAMOND BLADE
DB412	4"X.012"X1/2" DIAMOND BLADE
DB515	5"X.015" X1/2" DIAMOND BLADE
DB515H	5"X.015" X1/2" HIGH CON. DIAMOND BLADE

MARK V LAB

LABORATORY GRADE CUT-OFF & SECTIONING SUPPLIES

CW128	WATER SOLUBLE CUTTING OIL, 1 GAL.
CW32	WATER SOLUBLE CUTTING OIL, 1 QT.
SO128	SOLUBLE CUTTING OIL, 1 GAL.
SO32	SOLUBLE CUTTING OIL, 1 QT.
PSI-A	DRESSING STICK F/ ABRASIVE BLADES, EA.
PSI-D	DRESSING STICK F/ DIAMOND BLADES, EA.

VARIABLE SPEED MICROMETER FEED DIAMOND SECTIONING MACHINE WITH SELF CONTAINED COOLING, AUTO GRAVITY FEED & SHUT-OFF

Item	Description
MC-660	SECTIONING SAW W/MICROMETER CROSS- FEED


This Automatic Sectioning Machine combines variable speed with micrometer cross-feed for thin sectioning without deformation to the sample. A Gravity Feed System allows for a wide range of Feed Rates, Automatic Operation and Shut-Off. Internal Coolant Tank cools the blade and sprays the sample for a Cold Cut. Safety features include Low Voltage Controls and Safety Cover Auto-Shut-Off System. Heavy Duty DC Motor and Controller give blade speeds of 0-1000 rpm with a cross-sectional capacity of 1 1/2". Diamond, Borazon and Thin Abrasive Blades are used cut a wide variety of materials. Micrometer Cross-feed offers 1" of travel in thousandths for thin repeatable sectioning. 110V 220V



MARK V LAB

METALLURGICAL SAMPLE MOUNTING PRODUCTS

FORMULA-1 ACRYLIC FAST CURE MOUNTING SYSTEMS

Item	Description	MSDS
FMK-5	FORMULA 1 KIT, 5 LBS. POWDER, 2 QTS LIQUID & SUPPLIES	<p>The Formula-1 Acrylic Mounting System was developed to outperform all other Acrylic Systems on the market, with a combination of a 10-15 Minute Cure Time, the Best Adhesion/Lowest Shrinkage Rate, Highest Clarity and the Lowest Exothermic Temperature at 160 Degrees F. Formula-1 is the only system that offers a Standard Mix and a No-Mix Method for the Best Hole and Crevice Filling. The FMK-5 Kit comes complete with 5 Lbs. Powder, 2 Qts. Liquid Hardener, 5 ea. Plastic Molds and Mixing Supplies</p>
		
FMK-2	FORMULA 1 KIT, 2.5 LBS. POWDER, 1 QT. LIQUID & SUPPLIES	
FMK-25	FORMULA 1, 25 LBS. POWDER & 10 QTS. LIQUID	
FMK-50	FORMULA 1, 50 LBS. POWDER & 20 QTS. LIQUID	
FMK-S	FORMULA 1 SAMPLE KIT	
FML-128	FORMULA 1, HARDENER, 1 GAL.	
FML-32	FORMULA 1, HARDENER, 1 QT.	
FML-320	FORMULA 1, HARDENER, 2.5 GAL.	
FML-64	FORMULA 1, HARDENER, 2 QTS.	
FMP-10	FORMULA 1, POWDER, 10 LBS.	
FMP-100	FORMULA 1, POWDER, 100 LBS.	
FMP-2	FORMULA 1, POWDER, 2.5 LBS.	
FMP-25	FORMULA 1, POWDER, 25 LBS.	
FMP-5	FORMULA 1, POWDER, 5 LBS.	
FMR-5	FORMULA 1, 5 LBS. POWDER & 2 QTS. LIQUID	
FXK-2	FAST FORMULA, 2.5 LBS. POWDER, 1 QT. LIQUID & SUPPLIES	
FXK-5	FAST FORMULA, 5 LBS. POWDER, 2 QTS. LIQUID & SUPPLIES	
FXL-128	FAST FORMULA LIQUID, 1 GAL.	
FXL-32	FAST FORMULA LIQUID, 1 QT.	
FXL-320	FAST FORMULA LIQUID, 2.5 GAL.	
FXL-64	FAST FORMULA LIQUID, 2 QTS.	
FXP-2	FAST FORMULA POWDER, 2.5 LBS.	
FXP-25	FAST FORMULA POWDER, 25 LBS.	
FXP-5	FAST FORMULA POWDER, 5 LBS.	
FXR-5	FAST FORMULA, 5 LBS. POWDER & 2 QTS. FAST LIQUID	

MARK V LAB

METALLURGICAL SAMPLE MOUNTING PRODUCTS

HIGH QUALITY FAST CURE EPOXY MOUNTING SYSTEMS

Item	Description	MSDS RR RH
EZ-1	EZ MOUNT SYSTEM COMPLETE	



The EZ Mount System offers the best metallurgical mount possible over other cold mount & thermoset materials. This Two Part Epoxy System is Mixed by Volume, Cures in 15 Minutes to a Clear Mount, Offers Excellent Edge Retention and Grinding Properties and has No Fumes or Odor. The EZ-1 comes complete with a Hot Plate, Mixing Buret with Stand, 2 QTS Resin, 8 oz. Hardener, 5 ea. Silicon Rubber Molds and Mixing Supplies. A wide variety of Silicon Rubber Molds are available in Round and Rectangular sizes. See RM Rubber Molds.

PCZ-1	EZ MOUNT SYSTEM W/ VACUUM OVEN	MSDS RR RH
-------	--------------------------------	------------



Two Part Epoxy Mounting System for PCB's and other hard to fill specimens that require the best filling, edge retention and grinding properties available. This Two Part Epoxy System is the same as the EZ Mount System with Volumetric mixing. 15 min. cure and a clear mount accept that it comes with a Vacuum Oven instead of a Hot Plate. By drawing a slight vacuum at temperature (160F) the smallest holes, cracks and crevices are easily filled. The System comes with 8 x 10 x 8" Vacuum Oven with 76 to 0 cm Hg Gauge, Temperature Range of 80-300F, Vacuum Pump & Valve Systems, Mixing Buret, 2 Qts Resin, 8oz. Hardener, 5 ea. Rubber Molds and Mixing Supplies. 110V.

VACUUM BELL JARS AND PUMP SYSTEMS

Item	Description	Price
VIS/12	VACUUM SYSTEM W/12" JAR & PUMP	
VIS/8	VACUUM SYSTEM W/8" JAR & PUMP	

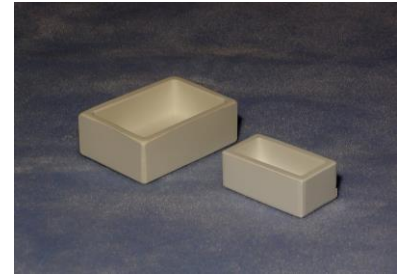


MARK V LAB

METALLURGICAL SAMPLE MOUNTING PRODUCTS

HIGH QUALITY FAST CURE EPOXY MOUNTING SUPPLIES & RUBBER MOLDS

Item	Description
RH-128	EZ MOUNT HARDENER, 1 GAL.
RH-16	EZ MOUNT HARDENER, 16 OZ
RH-32	EZ MOUNT HARDENER, 32 OZ.
RH-4	EZ MOUNT HARDENER, 4 OZ.
RH-8	EZ MOUNT HARDENER, 8 OZ.
RR128	EZ MOUNT RESIN, 1 GAL.
RR32	EZ MOUNT RESIN, 1QT.
RR64	EZ MOUNT RESIN, 2QTS.
RR640	EZ MOUNT RESIN, 5 GAL.
RRH128	EZ RESIN GAL. W/ HARDENER 16 OZ.
RRH64	EZ RESIN 2QTS. W/ HARDENER 8 OZ.
RM1	RUBBER MOLDS 1", 10/PKG.
RM12	RUBBER MOLDS, 1-1/4", 10/PKG.
RM15	RUBBER MOLDS, 1-1/2", 10/PKG.
RM2	RUBBER MOLDS, 2", 5/PKG.
RM225X1	RUBBER MOLDS, 2.25" X 1", 5/PKG.
RM3	RUBBER MOLD 3", EA.
RM3X2	RUBBER MOLD 3" X 2", EA.
RM5	RUBBER MOLD 5", EA.
RM5X125	RUBBER MOLD 5" X 1.25", EA.
RMC-12	PC 3 COUPON RUBBER MOLDS, 1-1/4" 10/PKG.
RMC-15	PC 3 COUPON RUBBER MOLDS, 1-1/2", 10/PKG.



METALLURGICAL SAMPLE MOUNTING PRODUCTS

QUIC-KIT ACRYLIC 1 MINUTE CURE MOUNTING SYSTEM

Item	Description
KW-1	QUIC KIT SET, A & B LIQUIDS W/80 MOUNTING PLATES



Quick Kit Set, A&B Liq., 80 PLTS

One Minute Mounting System for PCB Coupons utilizes a 2 part Acrylic Liquid System and 2 Acrylic Mounting Plates to form sandwich type of mount with the Circuit Board in the middle. The first plate is placed on the mounting post of the Kits Box or in the option. Teflon Fixture, a few drops of Liquid A are applied to the plate, the coupon is then set on the plate, a few drops of Liquid B are applied to the coupon and then the top plate is set onto the coupon. In 1 Minute the Mount has Cured and is ready for Grinding. The average finished mount is about 1/2" thick, is easy to grip and reduces Grinding and Polishing Time. Because of the viscosity of the two liquid system even the smallest hole is easily filled.

Quick Kit Set, A&B Liq., 80 PLTS

KW-A	#1 LIQUID, QUIC KIT FILLER RESIN
KW-B	#2 LIQUID, QUIC KIT HARDENER
KW-FX	QUIC KIT MULTI MOUNT FIXTURE
KW-P	QUIC KIT MOUNTING PLATES, 80EA.

MARK V LAB

METALLURGICAL SAMPLE MOUNTING PRODUCTS

PLASTIC MOUNTING MOLDS, RELEASES, CLIPS & SUPPLIES

Item	Description
MS122	DRY AEROSOL MOLD RELEASE, 11 OZ.
MS145W	LIQUID MOLD RELEASE, 8OZ
MS220	AERO DUSTER
PM1	PLASTIC MOLDS 1" 12/PKG
PM12	PLASTIC MOLDS 1-1/4", 12/PKG
PM15	PLASTIC MOLDS 1-1/2", 12/PKG
PMC100	PAPER MIXING CUPS. 100/PKG
PMC500	PAPER MIXING CUPS, 500/PKG.
RF12	1-1/4" PHENOLIC RING FORMS, 10/PKG.
RF12-100	1-1/4" PHENOLIC RING FORMS, 100/PKG.
RF15	1-1/2" PHENOLIC RING FORMS, 10/PKG.
RF15-100	1-1/2" PHENOLIC RING FORMS, 100/PKG.
RFT-12	TEFLON 1.25" 8 RING FORM MOUNT BASE
RFT-15	TEFLON 1.5" 8 RING FORM MOUNT BASE
SC2	PLASTIC MIXING CUPS, 4 OZ., 25/PKG.
SC4	PLASTIC MIXING CUPS, 4 OZ., 50/PKG.
SMR	SILICON SPRAY MOLD RELEASE, 5 OZ.
SRF-12	1-1/4 PHENOLIC FLAGE MOLD FOR STRUERS 12/PKG.
SRT-12	TEFLON 1.25" FLAGE FORM MOUNT BASE
SS-100	MIXING STICKS 100/PKG.
SS-500	MIXING STICKS 500/PKG.



METALLURGICAL SAMPLE MOUNTING CLIPS

C-1000	MET CLIPS, METAL MOUNTING CLIPS, 1000/PKG.
C-101	MET CLIPS, METAL MOUNTING CLIPS, 100/PKG.
CCP-100	COLORED PLASTIC MOUNTING CLIPS 100/PKG.
CCP-1000	COLORED PLASTIC MOUNTING CLIPS 100/PKG.
MC-P	PLASTIC MOUNT CLIPS, 100/PKG
MC-P1000	PLASTIC MOUNT CLIPS, 1000/PKG



MET-X ACRYLIC MOUNTING SYSTEMS

ML-128	MET-X HARDENER, 1 GAL.
ML-32	MET-X HARDENER, 1 QT.
MP-25	MET-X MOUNTING POWDER, 25 LBS.
MP-5	MET-X MOUNTING POWDER, 5 LBS.
MP-50	MET-X MOUNTING POWDER, 50 LBS.
MPK-2	MET-X MOUNTING KIT, 2.5LBS. POWDER & 1 QT. LIQUID
MPK-25	MET-X MOUNTING KIT, 25LBS. POWDER & 10 QTS. LIQUID
MPK-5	MET-X MOUNTING KIT, 5 LBS. POWDER & 2 QTS. LIQUID

MARK V LAB

COLORED & GLASS FILLED PHENOLIC MOUNTING POWDERS

Item	Description
BUT-5	BLACK FINA-MET POWDER, 5LBS.
DPB-1	PHENOLIC GLASS FILL, COARSE, 5 LB.
DPB-2	BLUE DIALLYL PHTHALATE MOUNTING POWDER, MEDIUM, 5LBS.
DPB-3	BLUE DIALLYL PHTHALATE MOUNTING POWDER, FINE, 5 LB.
GFE-1	EPOXY MOUNTING POWDER, 4 LBS.
GFE-25	EPOXY MOUNTING POWDER, 25LBS.
MPB	BLACK PHENOLIC MOUNTING POWDER, 5 LBS.
MPB-25	BLACK PHENOLIC MOUNTING POWDER, 25 LBS.
MPBR	BROWN PHENOLIC MOUNTING POWDER, 5 LBS.
MPG	GREEN PHENOLIC MOUNTING POWDER, 5 LBS.
MPG-25	GREEN PHENOLIC MOUNTING POWDER, 25 LBS.
MPGB	GREEN & BROWN PHENOLIC MOUNTING POWDER, 5 LBS.
MPGB25	GREEN & BROWN PHENOLIC POWDER, 25 LBS
MPR	RED PHENOLIC MOUNTING POWDER, 5 LBS.
MPR-25	RED PHENOLIC MOUNTING POWDER, 25 LBS.
TR-1	TRANSOPTIC MOUNTING POWDER, 5LBS...
TR-25	TRANSOPTIC MOUNTING POWDER, 25 LBS.
UTR-5	FINA-MET POWDER, 5 LBS
UTF-5	FINA-MET EXTRA FINE POWDER, 5 LBS.
UTR-25	FINA-MET POWDER, 25LBS.



Colored Phenolic & Transoptic Thermoset Powders are used in Mounting Press's for specimen sample mounting. Mounts are made at 150 degrees C at pressures between 3000-4200 psi. Transoptic Powder offers a Optically Clear Mold.



UTR & UTF Fina-Met Powder, Short Glass Filled Phenolic offers the Best Edge Retention and Grinding Properties of any thermoset mounting powder.

AUTOMATIC METALLURGICAL MOUNTING PRESS

Item	Description
METAPRESS-A	AUTOMATIC MOUNTING PRESS WITH MOLD

Fully Automatic Water Cooled Single or Dual Mold Mounting Press makes 1 or 2 mounts at once. The METAPRESS A features automatic microprocessor controlled operation, touch pad front panel controls and digital display of heating time, molding temperature, cooling temperature, ram up/down, auto/manual cooling, cycle start/stop and a direct reading pressure display. Molding pressure up to 310 Bar, molding temperature up to 300°C, thermostatically controlled heating power of 1800 W, automatic cooling cycle. Supplied with all necessary hoses, fittings, power cord, instruction manual & selectable mold sizes in 1", 1.25", 1.5", 2", 25mm, 30mm, 40mm & 50mm . 110V



MARK V LAB

METALLURGICAL GRINDER/POLISHER MACHINES SINGLE & DUAL WHEEL MACHINES WITH VARIABLE DRIVES

Item	Description
56011	METAPOL 2BVV, 8" WHEEL, VARIABLE (0-500 RPM) SPEED
56012	METAPOL 4BVV, 10" WHEEL, VARIABLE (0-500 RPM) SPEED
56027	METAPOL 3BVV, 8", 2 WHEEL VARI. (0-500 RPM) SPEED
56030	METAPOL 6BVV, 10", 2 WHEEL, VARI. (0-500 RPM) SPEED



Mark V Lab Metapol 2BVV & 3BVV Series Bench Top Metallurgical Grinder/Polisher with Single & Dual Wheel Metapols features Timer, Variable speed (100-1000 rpm) operation, preset fast speed buttons (100, 200, 300 rpm), auto mode (programmable speed, direction and time), tough and rugged GRP (glass reinforced plastic) non-corrosive body construction, water inlet and outlet for wheel lubrication. Metapol 2BVV Includes 8" or 10" Quick Change Wheel, Splash Guard and Cover.

56061	PAPER HOLDING BAND F/10" WHEEL, EA.
56062	10" ALUMINUM WHEELS, EA.
56053	8" ALUMINUM WHEEL, EA.
56054	PAPER HOLDING RING F/ 8" WHEEL, EA.

METPOL 4VA	METAPOL 4BVA, 10", WHEEL AUTO VARI. (0-500 RPM) SPEED
METPOL 6VA	METAPOL 6BVV, 10", 2 WHEEL, AUTO VARI. (0-500 RPM) SPEED

The **METAPOL 2VA & 3VA** Single or Dual Wheel 8" or 10" Automatic Metallurgical Grinder Polisher. The Metapol Automatic offers a variable speed (0-200 rpm), pneumatically adjustable individual piston polishing head for polishing 1 to 6 specimens independent of each other (note: with independent pistons, initial grinding can be done with finer abrasives thus reducing the number of grinding steps). Other benefits include easy to use controls, quick-locking swing mounted design. The base unit features Timer, Variable speed (100-1000 rpm) operation, preset fast speed buttons (100, 200, 300 rpm), auto mode (programmable speed, direction and time), tough and rugged GRP (glass reinforced plastic) non-corrosive body construction, water inlet and outlet for wheel lubrication.



MARK V LAB

FLOOR MODEL GRINDER/POLISHER TABLES

SINGLE, DUAL & TRIPLE WHEEL MACHINES WITH & 2 SPEED & VARIABLE DRIVES

Item	Description
MET-22	POLISHING TABLE, DUAL 8" WHEEL, 2 SPEED
MET-25	POLISHING TABLE, DUAL 8" WHEEL, VARIABLE SPEED
MET-32	POLISHING TABLE, TRIPLE 8" WHEEL, 2 SPEED
MET-35	POLISHING TABLE, TRIPLE 8" WHEEL, VARIABLE SPEED
MET-CHF	HOT & COLD GOOSENECK LAB FAUCET
MET-EOS	ELECTRICAL OUTLET STRIP 110V



MET-22 Grinder/Polisher Table with 2 Wheel, 2 Speed Motors.

Manufactured by Mark V Lab the METPOL22 8" Dual Wheel Grinder/Polisher Table is built from a Two Door Steel Cabinet 48"Wx30"Dx36"H and Laminated Counter-top with Backsplash. Assembled with Heavy Duty Components such as Two 2 Speed 1/3 hp. Air-cooled GE Motors, Stainless Steel Arbor Shafts with no-maintenance SKF Ball Bearing Assemblies, Kydex acid resistant Bowls and Drain System, Flexible Coolant Hoses with Ball Valves and Poly-V Belt Drives with Wheel Speeds of 150 & 300rpm. The MET-22 comes complete with two 56053 8" PVC Wheels, GB-8 Grit Grabbers and Splash Rings. Options include Almag Quick-Change Wheel System, 56054 Paper Holding Bands and 56055 Cover Lids, MET-S10 & MET-P/O Sinks, MET-CHF Gooseneck Faucet and ME-EOS Ground Fault Outlets. 110V 60 Hz. 220V 50 Hz.

MET-P/O	ACID RESISTANT POLYPRO SINK 10" X 10" X 7.5"
MET-P/O 12	ACID RESISTANT POLYPRO SINK 12" X 12" X 7.5"
MET-S10	STAINLESS STEEL SINK 10" X 12"
MET-SID	SEDIMENT INTERCEPTOR TANK 5 GALLON
MET-TRP	ACID RESISTANT SINK TRAP W/BOWL

WHEELS AND ACCESSORIES FOR MARK V GRINDER/POLISHERS

56051	ALUMUMIN DRIVE PLATE F/ 56052 WHEEL, EA.
56052	PVC 8" FLAT WHEEL, EA. FOR 56051
56053	PVC 8" WHEEL W/TAPER, EA
56054	PAPER HOLDING RING F/ 8" WHEEL, EA.
56055	COVER LID FOR 2B/3B, EA.
56056	PVC 9" FLAT WHEEL, EA. FOR 56051
56057	PVC 10" FLAT WHEEL, EA. FOR 56051
GB-8	8" GRIT-GRABBER DISCS, 10/PKG.
GB-9	9" GRIT-GRABBER DISCS, 10/PKG.
GB-10	10" GRIT-GRABBER DISCS, 10/PKG.



MARK V LAB

METALLURGICAL S/C GRINDING DISCS, SHEETS, STRIPS & ROLLS SILICON CARBIDE DISCS WITH PLAIN BACK IN 8" & 9" DIAMETERS



Item	Description
D8N1000	8" 3M S/C DISCS, 1000G, 100/PKG.
D8N120	8" S/C DISCS, 120G, 100/PKG.
D8N1200	8" 3M S/C DISCS, 1200G, 100/PKG.
D8N1500	8" 3M S/C DISCS, 1500G, 100/PKG.
D8N180	8" S/C DISCS, 180G, 100/PKG.
D8N2000	8" 3M S/C DISCS, 2000G, 100/PKG.
D8N240	8" S/C DISCS, 240G, 100/PKG.
D8N320	8" S/C DISCS, 320G, 100/PKG.
D8N400	8" S/C DISCS, 400G, 100/PKG.
D8N60	8" S/C DISCS, 60G, 100/PKG.
D8N600	8" S/C DISCS, 600G, 100/PKG.
D8N80	8" S/C DISCS, 80G, 100/PKG.
D8N-AS	8" S/C DISCS ASSORTED:120,240,400 & 600G, 25/ EA.
D8NAS/1000-2000	8" S/C DISCS ASSORTED:1000, 1200, 1500 & 2000G, 25/EA.
D9120	9" S/C DISCS, 120G, 100/PKG.
D9180	9" S/C DISCS, 180G, 100/PKG.
D9240	9" S/C DISCS, 240G, 100/PKG.
D9320	9" S/C DISCS, 320G, 100/PKG.
D9400	9" S/C DISCS, 400G, 100/PKG.
D9600	9" S/C DISCS, 600G, 100/PKG.
D980	9" S/C DISCS, 80G, 100/PKG.

SILICON CARBIDE DISCS WITH PLAIN BACK IN 8" X 1/2" DIAMETER

Item	Description
D85060	8" X 1/2" S/C DISCS, 60G, 100/PKG.
D85120	8" X 1/2" S/C DISCS, 120G, 100/PKG.
D85180	8" X 1/2" S/C DISCS, 180G, 100/PKG.
D85240	8" X 1/2" S/C DISCS, 240G, 100/PKG.
D85320	8" X 1/2" S/C DISCS, 320G, 100/PKG.
D85400	8" X 1/2" S/C DISCS, 400G, 100/PKG.
D85600	8" X 1/2" S/C DISCS, 600G, 100/PKG.

MARK V LAB

SILICON CARBIDE DISCS WITH PLAIN BACK IN 10", 12" & 14" DIAMETERS

Item	Description
D101000	10" 3M S/C DISCS, 1000G, 100/PKG.
D10120	10" S/C DISCS, 120G, 100/PKG.
D101200	10" 3M S/C DISCS, 1200G, 100/PKG.
D101500	10" 3M S/C DISCS, 1500G, 100/PKG.
D10180	10" S/C DISCS, 180G, 100/PKG.
D102000	10" 3M S/C DISCS, 2000G, 100/PKG.
D10240	10" S/C DISCS, 240G, 100/PKG.
D10320	10" S/C DISCS, 320G, 100/PKG.
D10400	10" S/C DISCS, 400G, 100/PKG.
D1060	10" S/C DISCS, 60G, 100/PKG..
D10600	10" S/C DISCS, 600G, 100/PKG.
D1080	10" S/C DISCS, 80G, 100/PKG.
D10-AS	10" S/C DISCS ASSORTED: 120,240,320 & 600 25/EA.
D10AS-50	10" S/C DISCS ASSORTED:120,240,400,600 & 1000G, 50/EA.
D121000	12" 3M S/C DISCS, 1000G, 100/PKG.
D12120	12" S/C DISCS, 120G, 100/PKG.
D121200	12" 3M S/C DISCS, 1200G, 100/PKG.
D121500	12" 3M S/C DISCS, 1500G, 100/PKG.
D12180	12" S/C DISCS, 180G, 100/PKG.
D122000	12" 3M S/C DISCS, 2000G, 100/PKG.
D12240	12" S/C DISCS, 240G, 100/PKG.
D12320	12" S/C DISCS, 320G, 100/PKG.
D12400	12" S/C DISCS, 400G, 100/PKG.
D1260	12" S/C DISCS, 60G, 100/PKG.
D12600	12" S/C DISCS, 600G, 100/PKG.
D1280	12" S/C DISCS, 80G, 100/PKG.

SILICON CARBIDE DISCS WITH ADHESIVE BACK IN 8" DIAMETER

Item	Description
AD8-12	8" PSA, S/C DISCS, 120G, 100/PKG.
AD8-18	8" PSA, S/A DISCS, 180G, 100/PKG.
AD8-24	8" PSA, S/C DISCS, 240G, 100/PKG.
AD8-32	8" PSA, S/C DISCS, 320G, 100/PKG.
AD8-40	8" PSA, S/C DISCS, 400G, 100/PKG.
AD8-6	8" PSA, S/C DISCS, 60G, 100/PKG.

GRIT GRABBER DISCS WITH 2 SIDED ADHESIVE BACK IN 8", 9", 10" & 12" DIAMETERS GB DISCS & GBS SPRAY ALLOW MULTIPLE RELEASES OF PLAIN BACK GRINDING DISCS

Item	Description
GB-10	10" GRIT-GRABBER DISCS, 10/PKG.
GB-12	12" GRIT-GRABBER DISCS, 10/PKG.
GB-8	8" GRIT-GRABBER DISCS, 10/PKG.
GB-9	9" GRIT-GRABBER DISCS, 10/PKG.
GBS-6	REMOUNTABLE DISC SPRAY ADHESIVE,,.6 OZ CAN



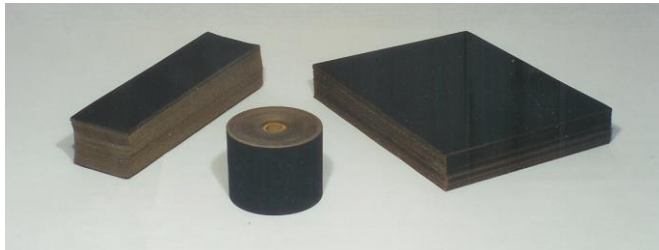
MARK V LAB

SILICON CARBIDE DISCS WITH ADHESIVE BACK IN 2 7/8", 10" & 12" DIAMETERS

Item	Description
D2-18	2-7/8" S/C DISCS, PSA, 180G, 100/PKG.
D2-24	2-7/8" S/C DISCS, PSA, 240G, 100/PKG.
D2-32	2-7/8" S/C DISCS, PSA, 320G, 100/PKG.
D2-40	2-7/8" S/C DISCS, PSA, 400G, 100/PKG.
D2-60	2-7/8" S/C DISCS, PSA, 600G, 100/PKG.
D2-AS	2-7/8" S/C DISCS ASSORTED: 180,240,320,400 & 600G, 25 EA.
AD10-12	10" PSA, S/C DISCS, 120G, 100/PKG.
AD10-18	10" PSA, S/C DISCS, 180G, 100/PKG.
AD10-24	10" PSA, S/C DISCS, 240G, 100/PKG.
AD10-32	10" PSA, S/C DISCS, 320G, 100/PKG.
AD10-40	10" PSA, S/C DISCS, 400G, 100/PKG.
AD10-6	10" PSA, S/C DISCS, 60G, 100/PKG.
AD10-60	10" PSA, S/C DISCS, 600G, 100/PKG.
AD12120	12" PSA S/C DISCS, 120G, 100/PKG.
AD12180	12" PSA S/C DISCS, 180G, 100/PKG.
AD12240	12" PSA, S/C DISCS, 240G, 100/PKG.
AD12320	12" PSA, S/C DISCS, 320G, 100/PKG.
AD12400	12" PSA, S/C DISCS, 400G, 100/PKG.
AD1260	12" PSA, S/C DISCS, 60G, 100 PKG.
AD12600	12" PSA, S/C DISCS, 600G, 100/PKG.
AD1280	12" PSA, S/C DISCS, 80G, 100/PKG.

SILICON CARBIDE 3" X 11" STRIPS WITH ADHESIVE BACK

Item	Description
AS3-12	3"X11" PSA, S/C STRIPS, 120G, 100/PKG.
AS3-24	3"X11" PSA, S/C STRIPS, 240G, 100/PKG.
AS3-32	3"X11" PSA, S/C STRIPS, 320G, 100/PKG.
AS3-40	3"X11" PSA, S/C STRIPS, 400G, 100/PKG.
AS3-60	3"X11" PSA. S/C STRIPS, 600G, 100/PKG.
AS3-AS	3"X11" ASSORTED STRIPS PSA: 240, 320, 400 & 600 GRITS



MARK V LAB

9" X 11" PLAIN BACK SILICON CARBIDE SHEETS

Item	Description
S9060	9" X 11" S/C SHEETS, 60G, 100/PKG.
S9120	9" X 11" S/C SHEETS, 120G, 100/PKG.
S9180	9" X 11" S/C SHEETS, 180G, 100/PKG.
S9240	9" X 11" S/C SHEETS, 240G, 100/PKG.
S9320	9" X 11" S/C SHEETS, 320G, 100/PKG.
S9400	9" X 11" S/C SHEETS, 400G, 100 PKG.
S9600	9" X 11" S/C SHEETS, 600G, 100/PKG
S980	9" X 11" S/C SHEETS, 80G, 100/PKG.

SILICON CARBIDE PLAIN BACK ROLLS IN 3" & 3 7/8" WIDTHS

Item	Description
R3-12	3" X 75' S/C ROLL, 120G, EA.
R3-18	3" X 75' S/C ROLL, 180G, EA.
R3-24	3" X 75' S/C ROLL, 240G, EA.
R3-32	3" X 75' S/C ROLL, 320G, EA.
R3-40	3" X 75' S/C ROLL, 400G, EA.
R3-60	3" X 75' S/C ROLL, 600G, EA.
R37-24	3-7/16" X 75' S/C ROLL, 240G
R37-32	3-7/16" X 75' S/C ROLL, 320G
R37-40	3-7/16" X 75' S/C ROLL, 400G
R37-60	3-7/16" X 75' S/C ROLL, 600G

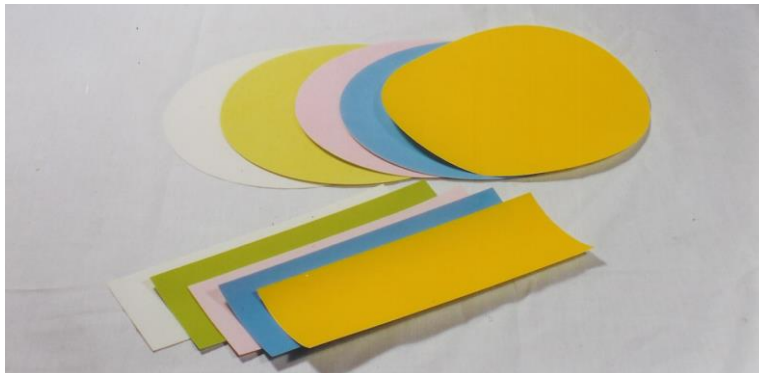
METALLURGICAL 4"X36" GRINDING BELTS IN S/C, A/O & ZIRC OXIDE

Item	Description
AMB120G	4"X36" A/O BELTS, 120G, 10/PKG.
AMB180G	4"X36" A/O BELTS, 180G, 10/PKG.
AMB240G	4"X36" A/O BELTS, 240G, 10/PKG.
AMB320G	4"X36" A/O BELTS, 320G, 10/PKG.
AMB50G	4"X36" A/O BELTS, 50G, 10/PKG.
AMB80G	4"X36" A/O BELTS, 80G, 10/PKG.
MB120G	4" X 36" S/C BELTS, 120G, 10/PKG.
MB180G	4" X 36" S/C BELTS, 180G, 10/PKG.
MB240G	4" X 36" S/C BELTS, 240G, 10/PKG.
MB320G	4" X 36" S/C BELTS, 320G, 10/PKG.
MB400G	4" X 36" S/C BELTS, 400G, 10/PKG.
MB50G	4" X 36" S/C BELTS, 50G, 10/PKG.
MB600G	4" X 36" S/C BELTS, 600G, 10/PKG.
MB60G	4" X 36" S/C BELTS, 60G, 10/PKG.
MB80G	4" X 36" S/C BELTS, 80G, 10/PKG.
ZB120G	4" X 36" ZIRCONIA BELTS, 120G, 5/PKG.
ZB180G	4" X 36" ZIRCONIA BELTS, 180G, 5/PKG.
ZB60G	4" X 36" ZIRCONIA BELTS, 60G, 5/PKG.
ZB80G	4" X 36" ZIRCONIA BELTS, 80G, 5/PKG.



MARK V LAB

LAPPING FILM IN DISCS, SHEETS & STRIPS ADHESIVE & PLAIN BACK FILMS IN ALUMINUM & SILICON OXIDES, & DIAMOND



LAPPING FILM STRIPS

Item	Description
FA380.3-100	A/O FILM 3" X 8", 0.3M, 100/PKG.
FA381-100	A/O FILM 3" X 8", 1M, 100/PKG.
FA3812-100	A/O FILM 3" X 8", 12M, 100 PKG.
FA3830-100	A/O FILM 3" X 8", 30M, 100/PKG.
FA383-100	A/O FILM 3" X 8", 3M, 100/PKG.
FA3840-100	A/O FILM 3" X 8", 40M, 100/PKG.
FA389-100	A/O FILM 3" X 8", 9M, 100/PKG.
FA38A0.3-100	A/O FILM 3" X 8", PSA, 0.3M,100/PKG.
FA38A1-100	A/O FILM 3" X 8", PSA, 1M, 100/PKG.
FA38A12-100	A/O FILM 3" X 8", PSA, 12M, 100/PKG.
FA38A30-100	A/O FILM 3" X 8", PSA, 30M, 100/PKG.
FA38A3-100	A/O FILM 3" X 8", PSA, 3M, 100/PKG.
FA38A40-100	A/O FILM 3" X 8", PSA, 40M, 100/PKG.
FA38A9-100	A/O FILM 3" X 8", PSA, 9M 100/PKG....

LAPPING FILM DISCS

Item	Description
FA4A0.3-100	A/O FILM 4", PSA, 0.3M, 100/PKG.
FA4A1-100	A/O FILM 4", PSA, 1M, 100/PKG.
FA4A12-100	A/O FILM 4", PSA, 12M, 100 PKG.
FA4A30-100	A/O FILM 4", PSA, 30M, 100 PKG.
FA4A3-100	A/O FILM 4", PSA, 3M, 100/PKG.
FA4A40-100	A/O FILM 4", PSA, 40M, 100/PKG.
FA4A9-100	A/O FILM 4", PSA, 9M, 100 PKG.
FA80.3-100	A/O FILM 8" X NH, 0.3M, 100/PKG.
FA81-100	A/O FILM 8" X NH, 1M, 100/PKG.
FA812-100	A/O FILM 8" X NH, 12M, 100/PKG.
FA830-100	A/O FILM 8 "X NH, 30M, 100/PKG.
FA83-100	A/O FILM 8" X NH, 3M, 100/PKG.
FA840-100	A/O FILM 8" X NH, 40M, 100/PKG.
FA89-100	A/O FILM 8" X NH, 9M, 100/PKG.
FA8A0.3-100	A/O FILM 8", PSA, 0.3M, 100/PKG.
FA8A1-100	A/O FILM 8", PSA, 1 M, 100/PKG.
FA8A12-100	A/O FILM 8", PSA, 12M,100/PKG.
FA8A30-100	A/O FILM 8", PSA, 30M, 100/PKG.
FA8A3-100	A/O FILM 8", PSA, 3M, 100/PKG.
FA8A40-100	A/O FILM 8", PSA, 40M, 100/PKG.
FA8A9-100	A/O FILM 8", PSA, 9M, 100/PKG.

MARK V LAB

LAPPING FILM SHEETS

FA9110.3-100	A/O FILM 9" X 11", 0.3M, 100/PKG.
FA9111-100	A/O FILM 9" X 11", 1M, 100/PKG.
FA91112-100	A/O FILM 9" X 11", 12M, 100/PKG.
FA91130-100	A/O FILM 9" X 11", 30M, 100/PKG.
FA9113-100	A/O FILM 9" X 11", 3M, 100/PKG.
FA91140-100	A/O FILM 9" X 11", 40M, 100/PKG.
FA9119-100	A/O FILM 9" X 11", 9M, 100/PKG.
FD360.5-10	DIAMOND FILM 3" X 6", 0.5M, 10/PKG.
FD361-10	DIAMOND FILM 3" X 6", 1M, 10/PKG.
FD363-10	DIAMOND FILM 3" X 6", 3M, 10/PKG.
FD366-10	DIAMOND FILM 3" X 6", 6M, 10/PKG.
FD369-10	DIAMOND FILM 3" X 6", 9M, 10/PKG.
FD660.5-5	DIAMOND FILM 6" X 6", 0.5M 5/PKG.
FD661-5	DIAMOND FILM 6" X 6", 1M, 5/PKG.
FD663-5	DIAMOND FILM 6" X 6", 3M, 5/PKG.
FD666-5	DIAMOND FILM 6" X 6", 6M, 5/PKG.
FD669-5	DIAMOND FILM 6" X 6", 9M, 5/PKG.

ALUMINA & ALUMINUM OXIDE POLISHING & GRINDING COMPOUNDS AVAILABLE IN SLURRIES & POWDERS

Item	Description
AS05	ALUMINA SUSPENSION, .05 MICRON, 6 OZ.
AS05-128	ALUMINA SUSPENSION, .05 MICRON, 1 GAL.
AS05-32	ALUMINA SUSPENSION, .05 MICRON, 32 OZ.
AS1	ALUMINA SUSPENSION, 1 MICRON, 6 OZ.
AS1-128	ALUMINA SUSPENSION, 1 MICRON, 1 GAL.
AS1-32	ALUMINA SUSPENSION, 1 MICRON, 32 OZ.
AS3	ALUMINA SUSPENSION, 0.3 MICRON, 6 OZ.
AS3-128	ALUMINA SUSPENSION, 0.3 MICRON, 1 GAL.
AS3-32	ALUMINA SUSPENSION, 0.3 MICRON, 32 OZ.
AS5	ALUMINA SUSPENSION, 5 MICRON, 6 OZ.
AS5-128	ALUMINA SUSPENSION, 5 MICRON, 1 GAL.
AS5-32	ALUMINA SUSPENSION, 5 MICRON, 32 OZ.
Item	Description
AP11	ALUMINA POWDER, 1 MICRON, 1 LB.
AP15	ALUMINA POWDER, 1 MICRON, 5 LBS.
AP31	ALPHA ALUMINA POWDER, 0.3 MICRON, 1 LB.
AP35	ALPHA ALUMINA POWDER, 0.3 MICRON, 5 LBS.
AP51	GAMMA ALUMINA POWDER, .05M, 1 LB.
AP55	GAMMA ALUMINA POWDER, .05M, 5 LBS.
Item	Description
AOP12-1	A/O POWDER, 12 MICRON, 1 LB.
AOP12-5	A/O POWDER, 12 MICRON, 5 LBS.
AOP15-1	A/O POWDER, 15 MICRON, 1 LB.
AOP15-5	A/O POWDER, 15 MICRON, 5 LBS.
AOP17-1	A/O POWDER, 17 MICRON, 1 LB.
AOP17-5	A/O POWDER, 17 MICRON, 5 LBS.
AOP20-1	A/O POWDER, 20 MICRON, 1 LB.



MARK V LAB

Item	Description
AOP20-5	A/O POWDER, 20 MICRON, 5 LBS.
AOP22-1	A/O POWDER, 22 MICRON, 1 LB.
AOP22-5	A/O POWDER, 22 MICRON, 5 LBS.
AOP240-1	A/O POWDER, 240G, 1 LB.
AOP240-5	A/O POWDER, 240G, 5 LBS.
AOP25-1	A/O POWDER, 25 MICRON, 1 LB.
AOP25-5	A/O POWDER, 25 MICRON, 5 LBS.
AOP3-1	A/O POWDER, 3 MICRON, 1 LB.
AOP320-1	A/O POWDER, 320G, 1 LB.
AOP320-5	A/O POWDER, 320G, 5 LBS.
AOP3-5	A/O POWDER, 3 MICRON, 5 LBS.
AOP400-1	A/O POWDER, 400G, 1 LB.
AOP400-5	A/O POWDER, 400G, 5 LBS.
AOP5-1	A/O POWDER, 5 MICRON, 1 LB.
AOP5-5	A/O POWDER, 5 MICRON, 5 LBS.
AOP600-1	A/O POWDER, 600G, 1 LB.
AOP600-5	A/O POWDER, 600G, 5 LBS.
AOP9-1	A/O POWDER, 9 MICRON, 1 LB.
AOP9-5	A/O POWDER, 9 MICRON, 5 LBS.



SILICON CARBIDE GRINDING POWDERS

Item	Description	Price
SCP120-1	S/C POWDER, 120G, 1 LB.	
SCP120-5	S/C POWDER, 120G, 5 LBS.	
SCP240-1	S/C POWDER, 240G, 1 LB.	
SCP240-5	S/C POWDER, 240G, 5 LBS.	
SCP320-1	S/C POWDER, 320G, 1 LB.	
SCP320-5	S/C POWDER, 320G, 5 LBS.	
SCP400-1	S/C POWDER, 400G, 1 LB.	
SCP400-5	S/C POWDER, 400G, 5 LBS.	
SCP600-1	S/C POWDER, 600G, 1 LB.	
SCP600-5	S/C POWDER, 600G, 5 LBS.	
SCP800-1	S/C POWDER, 800G, 1LB.	
SCP800-5	S/C POWDER, 800G, 5 LBS.	



MARK V LAB

METALLURGICAL GRADE DIAMOND POLISHING COMPOUNDS AVAILABLE IN WATER BASE PASTES, SPRAYS & SLURRIES

Item	Description
5 GRAM SYRINGE	
DPW025	MET-XW DIAMOND PASTE, (W. BASE), 025M, 5G.
DPW1	MET-XW DIAMOND PASTE , (W. BASE), 1M, 5G.
DPW15	MET-XW DIAMOND PASTE,(W. BASE), 15M, 5G.
DPW3	MET-XW DIAMOND PASTE, (W. BASE), 3M, 5G.
DPW30	MET-XW DIAMOND PASTE, (W. BASE), 30M, 5G.
DPW45	MET-XW DIAMOND PASTE, (W. BASE), 45M, 5G.
DPW6	MET-XW DIAMOND PASTE, (W. BASE), 6M, 5G.
DPW9	MET-XW DIAMOND PASTE, (W. BASE), 9M, 5G.

20 GRAM SYRINGE	
DPW2-025	MET-XW DIAMOND PASTE, (W. BASE), 025M, 20G.
DPW2-1	MET-XW DIAMOND PASTE, (W. BASE), 1M, 20G.
DPW2-15	MET-XW DIAMOND PASTE, (W. BASE), 15M, 20G.
DPW2-3	MET-XW DIAMOND PASTE, (W. BASE), 3M, 20G.
DPW2-30	MET-XW DIAMOND PASTE, (W. BASE), 30M, 20G.
DPW2-45	MET-XW DIAMOND PASTE, (W. BASE), 45M, 20G.
DPW2-6	MET-XW DIAMOND PASTE, (W. BASE), 6M, 20G.
DPW2-9	MET-XW DIAMOND PASTE, (W. BASE), 9M, 20G.

Item	Description
DIAMOND PASTE EXTENDER (WATER)	
MF-128	MECA-DIA DIAMOND EXTENDER FLUID,(W.BASE), 1 GAL.
MF-16	MECA-DIA DIAMOND EXTENDER FLUID,(W. BASE) 16 OZ.
MF-32	MECA-DIA DIAMOND EXTENDER FLUID,(W.BASE), 1 QT.

Item	Description
DWP025	DIAMIX PUMP SPRAY (W. BASE), 0.25M
DWP05	DIAMIX PUMP SPRAY (W. BASE), 0.5M
DWP1	DIAMIX PUMP SPRAY (W. BASE), 1M
DWP15	DIAMIX PUMP SPRAY (W. BASE), 15M
DWP3	DIAMIX PUMP SPRAY (W. BASE), 3M
DWP30	DIAMIX PUMP SPRAY (W. BASE), 30M
DWP45	DIAMIX PUMP SPRAY (W. BASE), 45M
DWP6	DIAMIX PUMP SPRAY (W. BASE), 6M
DWP9	DIAMIX PUMP SPRAY (W. BASE), 9M



MARK V LAB

METALLURGICAL GRADE WATER BASE DIAMOND SLURRY

Item	Description
DWS0.25	DIAMOND SLURRY (W. BASE), 0.25M, 1 PT.
DWS0.25-128	DIAMOND SLURRY (W. BASE), 0.25M, 1 GAL.
DWS0.5	DIAMOND SLURRY (W. BASE), 0.5M, 1 PT.
DWS0.5-128	DIAMOND SLURRY (W. BASE), 0.5M, 1 GAL.
DWS1	DIAMOND SLURRY (W. BASE), 1M, 1PT.
DWS1-128	DIAMOND SLURRY (W. BASE), 1M, 1 GAL.
DWS15	DIAMOND SLURRY (W. BASE), 15M, 1PT.
DWS15-128	DIAMOND SLURRY (W. BASE), 15M, 1GAL.
DWS3	DIAMOND SLURRY (W. BASE), 3M, 1PT.
DWS3-128	DIAMOND SLURRY (W. BASE), 3M, 1 GAL.
DWS30	DIAMOND SLURRY (W. BASE), 30M, 1 PT.
DWS30-128	DIAMOND SLURRY (W. BASE), 3M, 1GAL.
DWS6	DIAMOND SLURRY (W. BASE), 6M, 1PT.
DWS6-128	DIAMOND SLURRY (W. BASE), 6M, 1GAL.
DWS9	DIAMOND SLURRY (W. BASE), 9M, 1PT.
DWS9-128	DIAMOND SLURRY (W. BASE), 9M, 1 GAL.
Item	Description
DIAMOND SLURRY EXTENDER (WATER BASE)	
MF-128	MECA-DIA DIAMOND EXTENDER FLUID,(W.BASE), 1 GAL.
MF-16	MECA-DIA DIAMOND EXTENDER FLUID,(W. BASE) 16 OZ.
MF-32	MECA-DIA DIAMOND EXTENDER FLUID,(W.BASE), 1 QT.



METALLURGICAL GRADE DIAMOND POLISHING COMPOUNDS AVAILABLE IN OIL BASE PASTES, SPRAYS & SLURRIES

Item	Description
5 GRAM SYRINGE	
DPN025	MET-X II DIAMOND PASTE, 1/4M, 5G.(OIL BASE)
DPN1	MET-X II, DIAMOND PASTE, 1M, 5G.(OIL BASE)
DPN15	MET-X II, DIAMOND PASTE, 15M, 5G.(OIL BASE)
DPN3	MET-X II, DIAMOND PASTE, 3M, 5G.(OIL BASE)
DPN30	MET-X II, DIAMOND PASTE, 30M, 5 G.(OIL BASE)
DPN45	MET-X II, DIAMOND PASTE, 45M, 5G.(OIL BASE)
DPN6	MET-X II, DIAMOND PASTE, 6M, 5G.(OIL BASE)
DPN9	MET-X II, DIAMOND PASTE, 9M, 5G.(OIL BASE)
20 GRAM SYRINGE	
DPN2-025	MET-X II, DIAMOND PASTE, 1/4M, 20G.(OIL BASE)
DPN2-1	MET-X II, DIAMOND PASTE, 1M, 20G.(OIL BASE)
DPN2-15	MET-X II, DIAMOND PASTE, 15M, 20G.(OIL BASE)
DPN2-3	MET-X II, DIAMOND PASTE, 3M, 20G.(OIL BASE)
DPN2-30	MET-X II, DIAMOND PASTE, 30M, 20G.(OIL BASE)
DPN2-45	MET-X II, DIAMOND PASTE, 45M, 20G.(OIL BASE)
DPN2-6	MET-X II, DIAMOND PASTE, 6M, 20G.(OIL BASE)
DPN2-9	MET-X II, DIAMOND PASTE, 9M, 20G.(OIL BASE)
Item	Description
DIAMOND PASTE EXTENDER (OIL BASE)	
DPT-128	DIAMOND PASTE EXTENDER, 1 GAL.(OIL BASE)
DPT-16	DIAMOND PASTE EXTENDER, 16 OZ.(OIL BASE)..
DPT-32	DIAMOND PASTE EXTENDER, 32 OZ.(OIL BASE)



MARK V LAB

METALLURGICAL GRADE OIL BASE DIAMOND SPRAYS & SLURRIES

Item	Description
DAP-025	DIAMIX PUMP SPRAY (OIL. BASE), 0.25M
DAP-05	DIAMIX PUMP SPRAY (OILBASE), 0.5M
DAP-1	DIAMIX PUMP SPRAY (OIL BASE), 1M
DAP-15	DIAMIX PUMP SPRAY (OIL BASE), 15M
DAP-3	DIAMIX PUMP SPRAY (OIL BASE), 3M
DAP-30	DIAMIX PUMP SPRAY (OIL BASE), 30M
DAP-45	DIAMIX PUMP SPRAY (OIL BASE), 45M
DAP-6	DIAMIX PUMP SPRAY (OIL BASE), 6M
DAP-9	DIAMIX PUMP SPRAY (OIL BASE), 9M



Item	Description
DS05	DIAMOND SLURRY (OIL BASE), 0.5M, 1PT.
DS1	DIAMOND SLURRY (OIL BASE), 1M, 1 PT.
DS15	DIAMOND SLURRY (OIL BASE), 15M, 1PT.
DS3	DIAMOND SLURRY (OIL BASE), 3M, 1PT.
DS30	DIAMOND SLURRY (OIL BASE), 30M, 1PT.
DS6	DIAMOND SLURRY (OIL BASE), 6M, 1PT.
DS9	DIAMOND SLURRY (OIL BASE), 9M, 1PT.



DIAMOND SLURRY EXTENDER (OIL BASE)

Item	Description
DPT-128	DIAMOND PASTE EXTENDER, 1 GAL.(OIL BASE)
DPT-16	DIAMOND PASTE EXTENDER, 16 OZ.(OIL BASE)..
DPT-32	DIAMOND PASTE EXTENDER, 32 OZ.(OIL BASE)

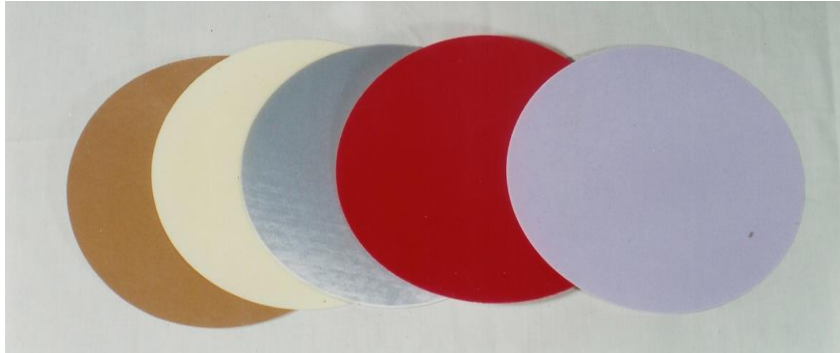
METALLURGICAL COLLOIDAL SILICA POLISHING SUSPENSIONS

Item	Description
C06-128	COLLOIDAL SILICA SUSPENSION, .06M, 1 GAL.
C06-32	COLLOIDAL SILICA SUSPENSION, .06M, 1 QT.



MARK V LAB

METALLURGICAL POLISHING CLOTHS WITH PSA & PLAIN BACKING AVAILABLE IN 2 7/8", 8", 9", 10", & 12" DIAMETERS



Item	Description
STANDARD POLISHING CLOTHS	
MC10	ALPHA A CLOTH, F/10" WHEEL, 10/PKG.
MC10A	ALPHA A CLOTH, 10" PSA, 10/PKG.
MC12	ALPHA A CLOTH, F/12" WHEEL, 10/PKG.
MC12A	ALPHA A CLOTH, 12" PSA, 10/PKG.
MC14A	ALPHA A CLOTH, 14" PSA, 10/PKG.
MC2A	ALPHA A CLOTH, 2 7/8" PSA, 20/PKG.
MC8	ALPHA A CLOTH, F/8" WHEEL, 10/PKG.
MC82A	ALPHA A CLOTH, 8" X 2.5" PSA, 10/PKG.
MC8A	ALPHA A CLOTH, 8" PSA, 10/PKG.
MC9A	ALPHA A CLOTH, 9" PSA 10/PKG.
NC10	NYLON CLOTH, F/10" WHEEL, 10/PKG.
NC12	NYLON CLOTH, F/12" WHEEL, 10/PKG.
NC12A	NYLON CLOTH, 12" PSA, 10/PKG.
NC14A	NYLON CLOTH, 14" PSA, 10/PKG.
NC2A	NYLON CLOTH, 2 7/8" PSA, 20/PKG.
NC8	NYLON CLOTH, F/ 8" WHEEL, 10/PKG.
NC82A	NYLON CLOTH, 8 X 2 1/2" PSA, 10/PKG.
NC8A	NYLON CLOTH, 8" PSA, 10/PKG.
SA10A	SATIN CLOTH 10" PSA, 10/PKG.
SA12A	SATIN CLOTH 12" PSA, 10/PKG.
SA14A	SATIN CLOTH 14" PSA, 10/PKG.
SA8A	SATIN CLOTH 8" PSA, 10/PKG.
SC10	SILK CLOTH, F/10" WHEEL, 10/PKG.
SC10A	SILK CLOTH 10" PSA, 10/PKG.
SC12	SILK CLOTH, F/12" WHEEL, 10/PKG.
SC12A	SILK CLOTH 12" PSA, 10/PKG.
SC14A	SILK CLOTH 14" PSA, 10/PKG.
SC8	SILK CLOTH, F/8" WHEEL, 10/PKG.
SC8A	SILK CLOTH 8" PSA, 10/PKG.
TC10	MET-X CLOTH, 10" PSA, 10/PKG.
TC12	MET-X CLOTH, 12" PSA, 10/PKG.
TC14	MET-X CLOTH, 14" PSA, 10/PKG.
TC2	MET-X CLOTH, 2 7/8" PSA, 20/PKG.
TC8	MET-X CLOTH, 8" PSA, 10/PKG.
TC82	MET-X CLOTH, 8" X 2-1/2" PSA, 10/PKG.
TC9	MET-X CLOTH, 9" PSA, 10/PKG.

Our most popular final polish cloth used with Diamond or Alumina for most materials. Alpha A also known as microcloth has a short nap and is brown in color. Available in PSA or plain back.

Nylon final polish cloth used with Diamond or Alumina for polishing most materials while maintaining flatness. This napless cloth is off white in color. Available in PSA or plain back.

Satin final polish cloth used with Diamond or Alumina for polishing most materials while maintaining flatness. This PSA napless cloth is white in color.

Silk final polish cloth used with Diamond or Alumina for while maintaining flatness This napless cloth is white in color.

Met-X Cloth is a napless cloth used with Diamond as a first polish cloth on a variety of materials. Also known as Pan cloth this most common of first polish cloths has a parchment appearance

MARK V LAB

METALLURGICAL POLISHING CLOTHS WITH PSA & PLAIN BACKING AVAILABLE IN 8", 9", 10", 12" & 14" DIAMETERS

Item	Description
SPECIALTY POLISHING CLOTHS	
ABC-12A	ALPHA SB (SOFT) CLOTH 12", PSA, 10/PKG.
ABC-14A	ALPHA SB (SOFT) CLOTH, 14", PSA, 10/PKG.
ABC-8A	ALPHA B CLOTH, 8", PSA 10/PKG.
BC10	GREEN BILLIARD CLOTH, F/10"WHL.,10/PKG.
BC12	GREEN BILLIARD CLOTH, F/12"WHL.,10/PKG.
BC8	GREEN BILLIARD CLOTH, F/8"WHL.,10/PKG.
CC10	CANVAS CLOTH, F/10" WHL.,10/PKG.
CC12	CANVAS CLOTH, F/12" WHL.,10/PKG.
CC8	CANVAS CLOTH, F/8" WHL.,10/PKG.
KC12	BROADCLOTH, F/12" WHEEL, 10/PKG.
KC8	BROADCLOTH, F/8" WHEEL, 10/PKG.
MCR10A	MICRO RAYON WHITE CLOTH, 10" PSA, 10/PKG.
MCR12A	MICRO RAYON WHITE CLOTH, 12" PSA, 10/PKG.
MCR8A	MICRO RAYON WHITE CLOTH, 8" PSA, 10/PKG.
MCR9A	MICRO RAYON WHITE CLOTH, 9" PSA, 10/PKG.
MEC10	COTTON CLOTH, F/10"WHEEL, 10/PKG.
MEC12	COTTON CLOTH, F/12"WHEEL, 10/PKG.
MEC8	COTTON CLOTH, F/8" WHEEL, 10/PKG.
MT10A	MASTERCHEM CLOTH 10" PSA, 10/PKG.
MT12A	MASTERCHEM CLOTH 12" PSA, 10/PKG.
MT14A	MASTERCHEM CLOTH 14" PSA, 10/PKG.
MT8A	MASTERCHEM CLOTH 8" PSA, 10/PKG.
MTP10A	10" PSA POLYTECH SUPREME CHEM CLOTH, 10/PKG.
MTP12A	12" PSA POLYTECH SUPREME CHEM CLOTH, 10/PKG.
MTP14A	14" PSA POLYTECH SUPREME CHEM CLOTH, 10/PKG.
MTP8A	8" PSA POLYTECH SUPREME CHEM CLOTH, 10/PKG.
RC10	RED FELT CLOTH, F/10"WHEEL, 10/PKG.
RC12	RED FELT CLOTH, F/12"WHEEL, 10/PKG.
RC8	RED FELT CLOTH, F/8"W, 10/PKG.
RC8A	RED FELT CLOTH, 8" PSA, 10/PKG.
VC10	RAY/VEL CLOTH, F/10"WHEEL, 10/PKG.
VC12	RAY/VEL CLOTH, F/12"WHEEL, 10/PKG.
VC8	RAY/VEL CLOTH, F/8"WHEEL, 10/PKG.

Final polish blue color medium nap cloth used with Diamond or Alumina for soft materials.

First polish green wool cloth used with Alumina & Aluminum Oxide slurries for ferrous materials.

Coarse polishing tan canvas cloth used with Aluminum Oxide & Silicon Carbide slurries.

Final polish low nap tan wool cloth used with Alumina.

Final polish white color low nap cloth used with Diamond or Alumina for soft materials.

Final polish low nap tan cotton cloth used with Diamond, Alumina and oxide for soft materials.

Low nap medium grade cloth has black suede appearance, with heavy body & polymer inner coat for chemical polishing.

Low nap highest grade cloth has black suede appearance, with heavy body & polymer inner coat for chemical polishing.

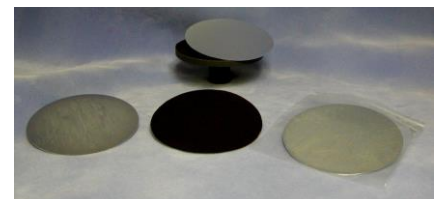
First polish red felt wool cloth used with Alumina & Aluminum Oxide slurries for ferrous materials.

Final polish medium nap black velvet cloth used with Alumina for soft materials.

QUICK-CHANGE 2 PART WHEEL SYSTEM FOR PSA POLISHING CLOTHS

MAGNA DISC SYSTEM USES A MAGNETIZED RUBBER DISC & 2 PLATED STEEL

Item	Description
MAG-1	8" MAGNA DISK SYSTEM: 1 MAGNETIC DISC & 2 METAL DISCS
MAG-10	10" MAGNA DISK SYSTEM: 1 MAGNETIC DISC & 2 METAL DISCS
MAG-12	12" MAGNA DISK SYSTEM: 1 MAGNETIC DISC & 2 METAL DISCS
MAG-13	10" METAL DISCS, 2 EA.
MAG-2	8" MAGNETIC DISK, EA.
MAG-20	10" MAGNETIC DISK, EA.
MAG-22	12" MAGNETIC DISK, EA.
MAG-23	12" METAL DISK, 2/PKG.
MAG-3	8" METAL DISK, 2/PKG.

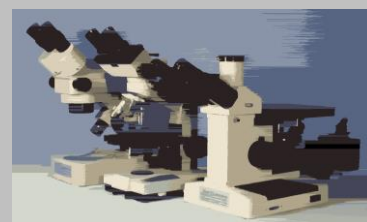


MARK V LAB

MARK V LABORATORY METALLURGICAL MICROSCOPES INVERTED POLARIZING BRIGHTFIELD, UPRIGHT & STEREO SCOPES



Item	Description
	<p>The MXLP Precision Inverted Brightfield Polarizing Trinocular Microscope Features, Excellent Optics, Ergonomic Controls, 6"x7" Coaxial Mechanical Stage, Kohler Quartz Halogen illumination with a compact space saving design. The MXLT comes complete with 10X Widefield Eyepieces, 5X, 10X, 20X & 40X & 50X Achromatic Objectives, Color Filtration Pack, Stage Clip and Dust Cover. This Microscope Makes an ideal optical platform for Digital and other Camera Systems. Option 100X Plan Achromatic Objectives. 110V/ 220V Bulb # 64250 6V 20W</p>
	<p>The MXT Precision Upright Brightfield Trinocular Microscope Features, Polarizing Optics, Ergonomic Controls, Large X-Y Coaxial Stage, Kohler Quartz Halogen Illumination with compact space saving design. The MXT comes complete with 10X Widefield Eyepieces, 5X, 10X, 20X & 40X Achromatic Objectives, Color Filtration Pack, Metal Microscope Slides and Dust Cover. This Microscope makes an ideal optical platform for Digital and other Camera Systems. Options 50X & 100X Plan Achromatic Objectives. 110V/ 220V Bulb # 64250 6V 20W</p>
	<p>The MZ616T Trinocular Zoom Stereo Microscope comes complete with 10X Widefield Eyepieces with 7.5 - 45X as standard powers. The microscopes features adjustable Post Style Stands with built-in Reflected and Transmitted Quartz Halogen Illuminators. This Microscope makes an ideal optical platform for Digital and other Camera Systems. Options include Post Extensions and Ring Light Illuminators. 110V/ 220V</p>



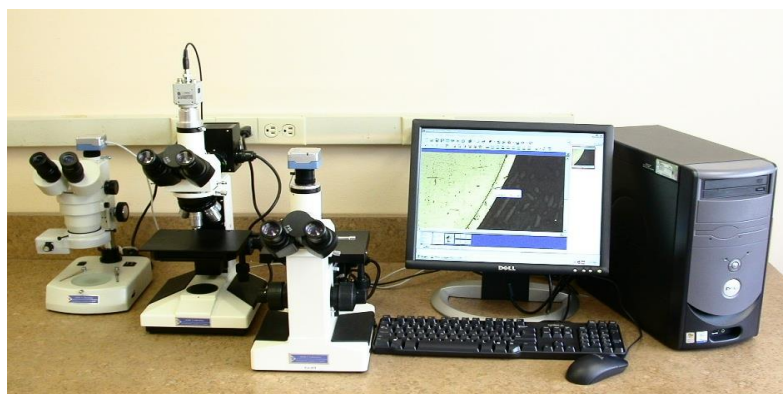
MARK V LAB

METALLURGICAL MICROSCOPE ACCESSORYS

Item	Description
MCP-S	LEVELING CLAY STICK
MMS	METAL MICROSCOPE SLIDE
SLHP	SAMPLE LEVELING PRESS
SM-IN	METAL INCH STAGE MICROMETER, .001" DIV.
SM-M	METAL METRIC STAGE MICROMETER, .01 MM DIV.



MARK V MICROSCOPE DIGITAL CAMERA'S & IMAGING SYSTEMS



Item	Description
MVOPTIC	2500 DIGITAL MICROSCOPE CAMERA SYSTEM W/ SOFTWARE

Maximum pixels - Minimum price. A first for the Digital Microscopy market, the **MVOPTIC 2500** features 5.0 Megapixel resolution at a reasonable price. The 2500 is a high-resolution microscope camera using a high-speed USB connection. Preview live images, capture and save images in a variety of formats. The small and lightweight design makes even this powerful camera very easy to use and mount on virtually any microscope in the world. This CMOS camera with C-ring Mount comes with a Microscope Adapter or Reducing Lens System and uses USB connecting cable for high speed PC connection. The standard 3.0 Capture and Measuring Software allows for multiple calibrations for 1-3 Microscopes and measures lines, angles, radius's, areas, etc. that appear in image data box's on the screen. Report Generation is also included. The 2500 comes complete with Calibration Slide for accurate calibrations and measurements. Complete Packages are available with Microscope, Camera & Dell PC, Fully Loaded, Calibrated with ASTM Certification.

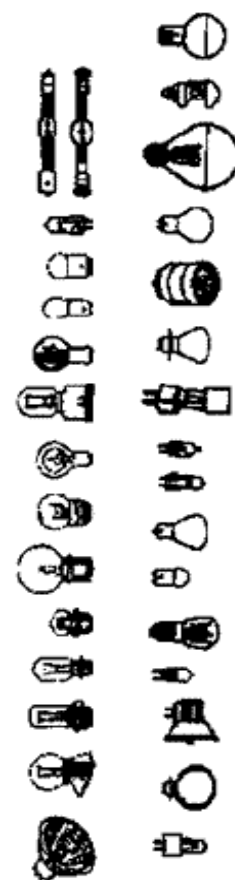


MVOPTID	CUSTOM DELL PC W/ DVI FLAT MONITOR & DVI GRAPHICS
MVOPTIM	3.0 IMAGE ANALYSIS SOFTWARE FOR MVOPTIC CAMERA

MARK V LAB

MICROSCOPE BULB'S FOR MARK V, UNITRON, OLYMPUS & NIKON

Item	Description
1630	BAUSCH & LOMB ILLUMINATOR. BULB, EA.
64250	HALOGEN BULB, 20W, 6V
64425	HALOGEN BULB, 20W, 12V, EA.
64440	HALOGEN BULB, 50W, 12V, EA.
64610	HALOGEN BULB, 50W, 12V, EA.
64625	HALOGEN BULB, 100W, 12V, EA.
64633	HALOGEN BULB, 150W, 15V, EA.
64640	VERSAMET BULB 150W, 24V, EA.
64642	HALOGEN BULB, 150W, 24V, EA.
64655	HALOGEN BULB, 250W, 24V, EA.
7023	HALOGEN BULB, 110W, 12V, EA.
7388	HALOGEN BULB, 20W, 6V, EA.
76513	NIKON EPIPHOT BULB, 100W, 12V, EA.
76516	NIKON EPIPHOT BULB, 50W, 12V, EA.
8018	HALOGEN PROJECTOR BULB, 15W, 6V, EA.
8024	BULB, 12V 40W, EA.
EJA	PROJECTION BULB, 150W, 21V (3300K)
EKE	PROJECTION BULB, 150W, 21V
EL-12B	UNITRON BME BULB 15W, 6V
EL-1B	UNITRON BN-11 BULB, 50W, 13.5V
EL-2B	UNITRON MEC BULB, 8V 12W, EA.
EL38	UNITRON BULB, 8V 15 W. EA.
EL-3B	UNITRON BULB, 12W, 8V, EA.
ELH	PROJECTION BULB, 300W, 120V
EMC	PROJECTION BULB, 100W, 12V
LS15	OLYMPUS BULB F/BH 6V, 2.5A, EA
MEQXB	REPLACEMENT REFLECTED BULB F/ MEQX MICROSCOPES
MEQXT	REPLACEMENT TRANSMITTED BULB F/ MEQX MICROSCOPE
MHT8V	ILLUMINATOR BULB F/MHT1000
MIC-1	DUAL RING ILLUMINATOR BULB
PCR-BU	PCR-2200 BULB
PCS-BU	PCS-400 BULB
SHT-8V	SHIMADZU ILLUMINATOR BULB EA.
TQ-5LW	FLUORESCENT RING BULB REPLACEMENT, 17 WATT
TQ-7LX	FLUORESCENT RING BULB HI- INTENSITY REPLACEMENT, 17 W



MICROSCOPE FIBER OPTIC ILLUMINTORS

Item	Description
TQ-AN1	FIBERLIGHT ANULAR RING 2.3" I.D.
TQ-AN2	FIBERLIGHT ANULAR RING 2.6" I.D.
TQ-DLP	DUAL LIGHT PIPE, EA.
TQ-FOI	FIBER OPTIC ILLUMINATOR UNIT
TQ-SLP	SINGLE LIGHT PIPE

American Made Fiber Optic Illuminator for most Stereo Microscopes with variable Hi-Intensity 150 Watt Quartz Halogen Reflector Bulb. Fan cooled with Low Noise & Vibration the TQ-FOI accepts the wide range of Light Guides and Annular Ring Lights Listed. 110V.



MARK V LAB

MICROSCOPE FLUORESCENT ILLUMINTORS

Item	Description
MIC-1	DUAL RING ILLUMINATOR BULB
MIC-O-LITE	DUAL RING ILLUMINATOR, COMPLETE
TQ-5LC	FLUORESCENT RING LIGHT ILLUMINATOR SINGLE INTENSITY
TQ-5LW	FLUORESCENT RING BULB REPLACEMENT, 17 WATT
TQ-7LC	FLUORESCENT RING LIGHT VARIABLE H-INTENSITY(VIDEO)
TQ-7LX	FLUORESCENT RING BULB HI- INTENSITY, 17 WATT



The **TQ-5LC & TQ-7LC** Fluorescent Ring Illuminators provide bright, cool, shadow free illumination for stereo microscopes. Attached directly to the microscope body, the ring light surrounds objects with light that emanates from every part of its plane. Fluorescent Rings come complete with 110V Power Supply.

MARK V LAB MICROHARDNESS & PORTABLE ROCKWELL TESTERS

Item	Description	Price
MHT1000	AUTOMATIC MICRO HARDNESS TESTER, 15-1000 GRAM LOAD	
MHT-KD	KNOOP DIAMOND INDENTER F/ MHT1000	
MHT-VD	VICKERS DIAMOND INDENTER F/ MHT1000	

The **MHT1000** Hardness Tester measures in both Vickers and Knoop ranges and features automatic pushbutton load/time sequencing. Test loads are between 15 and 1000 grams with load durations from 5 to 45 seconds. The microscope offers magnifications of 100X for observation and 400X for measuring. Measuring is done with an ocular micrometer with a course scale of 20 microns and a fine scale of .5 microns. The X, Y sample stage is 120 X 120mm. Digital computer readout available. 110V



Item	Description
MHR316	PORTABLE ROCKWELL TESTER W/ BLOCK 20-65 HRC
MHR316.2	REPLACEMENT INDENTER F/ 316 TESTER
MHR316	ROCKWELL TEST BLOCK 20-65 HRC

Portable Hardness Tester for Rockwell C Scales 20-65 HRC. The **MHR316** Unit features built-in Fiber Optic Light Source, Calibrated Preload Indenter and Direct Reading 60X Microscope. The Portable design makes it ideal for large pieces, field work, small Machine Shops, Heat Treaters, and Quality Control personnel. The MHR316 Tester comes complete with Calibrated Test Block Conversion Calculator and Carrying Case.. A full range of Certified A.S.T.M. Test Blocks are available. Accuracy is +/- 1.5 points. Power 2 AAA Batteries



MARK V LAB MICROHARDNESS & ROCKWELL TEST BLOCKS

Item	Description
TB-KN	KNOOP TEST BLOCK
TB-RB	ROCKWELL B TEST BLOCK
TB-RC	ROCKWELL C TEST BLOCK
TB-VK	VICKERS TEST BLOCK

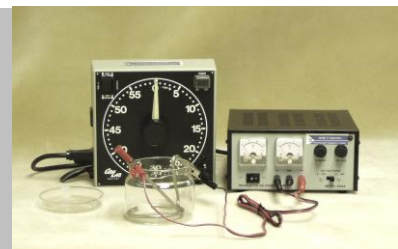


MARK V LAB

MARK V LABORATORY ELECTRO ETCHER & VIBROGRAVER

Item	Description
MVEE	MARK V ELECTRO ETCHER, COMPLETE, 110/220V

Manufactured by Mark V Laboratory, for Etching Mounted and Un-mounted Samples to show Grain, Case Depth etc. The **MVEE** Features a Dual Range 1-15 & 15-30 DC Power Supply with Output Voltage@ 0-2 Amps with voltage regulation load of less than 0.1% from no load to full load. Dual Meters simultaneously monitor the output voltage and current. The system comes complete with Stainless Steel Cathode and Anode, Pyrex Etching Chamber with Lid, 24" Connector Cable, and Reagents Chart. 110V 60Hz 220V 50Hz.



Item	Description
VG-1	VIBROGRAVER W/ CARBIDE TIP

Mark V Laboratory **VG-1** Vibrogravers come with Diamond Tips for Engraving Samples and Specimens. Ideal for Identification and Serializing all types of parts. 110V



THERMOLYNE HOT PLATES, OVENS & FURNACES

Item	Description
THP18300	THERMOLYNE DIGITAL HOT PLATE, 110V

Thermolyne **THP18300** Digital Hot Plates Feature: Die cast Aluminum case with Ceramic Coated Stainless Steel Top. Sensitive Thermostatic Control provides Protection of Internal Components against Spillage. Embedded Heating Elements transfer heat evenly to the top plate, supplying uniform heat across its surface, Digital Readout & Control insure accurate temperature range. 110/220V.



Thermolyne Ovens Feature: Double Pane Glass Windowed Door providing Easy Viewing, Thermometer Port at the top of the oven accepts standard Stem Thermometers. 12"x12"x12" Chamber is Vented through the top for removal of moisture and other vapors. Rapid Heat-up Saves Time (56C in 9 min.) Operating Temperature Ambient -140C. Aluminum Chamber is Easy to Clean. Supplied with one Removable Shelf. 110/220V.



MARK V LAB

BRANSON ULTRASONIC CLEANER UNITS & SOLUTIONS



Branson now offers you seven ways to get the full efficient power of ultrasonic cleaning at an affordable price. It's the Bransonic line of low cost, high quality ultrasonic cleaners, ranging from one quart to eight gallons.

Dependable Solid State Circuitry is used for a long trouble-free life (no fans or other moving parts). The Generator and Heater have separate Controls and the Metal/Ceramic Transducers assure both Durability and Superior Power. Three Types of Units are available: MT Mechanical Timer, MTH Mechanical Timer with Heat & DTH Digital Timer with Heat.

Item	Description
B1510MT	ULTRASONIC CLEANER 1/2 GAL. UNIT W/TIMER
B2510MT	ULTRASONIC CLEANER 3/4 GAL. UNIT W/TIMER
B3510MT	ULTRASONIC CLEANER 1-1/2 GAL. UNIT W/TIMER
B5510MT	ULTRASONIC CLEANER 2-1/2 GAL. UNIT W/TIMER
B8510MT	ULTRASONIC CLEANER 5.5 GAL.UNIT W/TIMER
BRANSON OPTIONS	MHT MECHANICAL TIMER W/ HEAT & DHT DIGITAL TIMER W/ HEAT
BRANSON OPTIONS	STAINLESS STEEL PERFORATED & SOLID TRAYS
BEC-128	BRANSON ELECTRONICS CLEANER 1 GAL.
BGP-128	GENERAL PURPOSE CLEANER, 1 GAL.
BIS-128	INDUSTRIAL STRENGTH CLEANER, 1 GAL
BOX-128	OXIDE REMOVERCLEANER, 1 GAL



MSDS BEC